

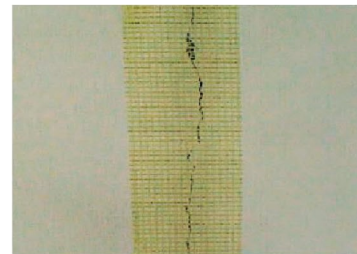
# Fiber Mesh Tape

Scanwolf's Synthetic Fiber Mesh was developed and designed to enhance the overall properties of the hardened concrete. Scanwolf's Synthetic Fiber Mesh was used as a secondary reinforcement in concrete and was added to concrete on slab-on-grade construction to reduce early plastic shrinkage cracking and to increase overall impact and abrasion resistance through improved toughness. These fibers can also be added to precast concrete to improve the overall resistance on handling stresses, to pumped concrete to improve cohesiveness and to shotcrete to minimize rebound and waste material.



Mesh Tape Size:  
50 x 50mm

Roll Length:  
50 meters



All specification information and design subject to change without prior notice. Above measurement is subject to +/- 1mm.